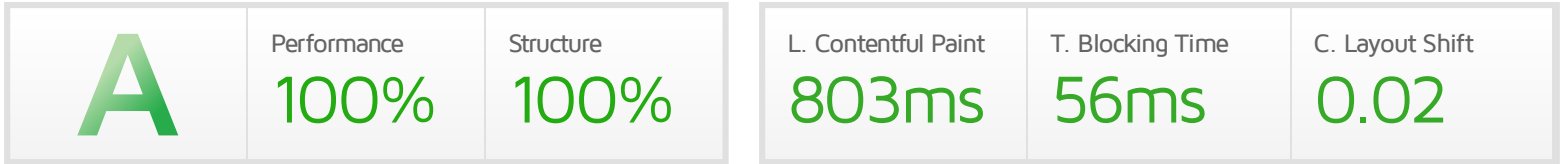




# Performance Report for: <https://www.brodsolutions.com/>

Report generated: Sun, Sep 11, 2022 8:53 AM -0400 (monitored job)  
 Test Server Location: Vancouver, Canada  
 Using: Chrome (Desktop) 103.0.5060.134, Lighthouse 9.6.4



## Top Issues

IMPACT	AUDIT	
Low	Serve static assets with an efficient cache policy	Potential savings of 14.9KB
Low	Reduce unused JavaScript <small>LCP</small>	Potential savings of 226KB
Low	Avoid enormous network payloads <small>LCP</small>	Total size was 648KB
Low	Properly size images	Potential savings of 14.6KB
Low	Avoid long main-thread tasks <small>TBT</small>	3 long tasks found

## Page Details



Total Page Size - 648KB



Total Page Requests - 37



HTML JS CSS IMG Video Font Other

### How does this affect me?

Today's web user expects a fast and seamless website experience. Delivering that fast experience can result in increased visits, conversions and overall happiness.

As if you didn't need more incentive, **Google has announced that they are using page speed in their ranking algorithm.**

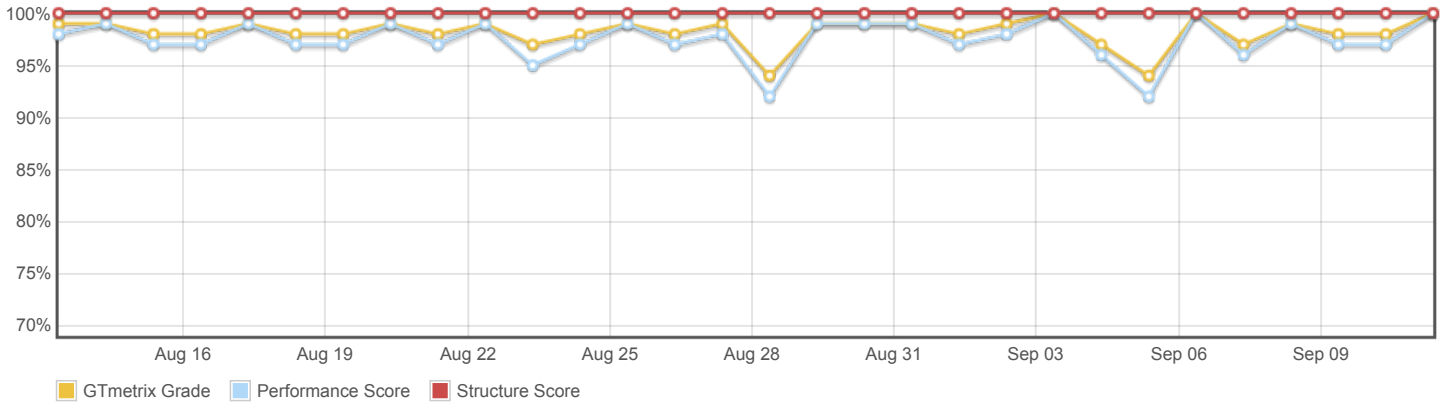
### About GTmetrix



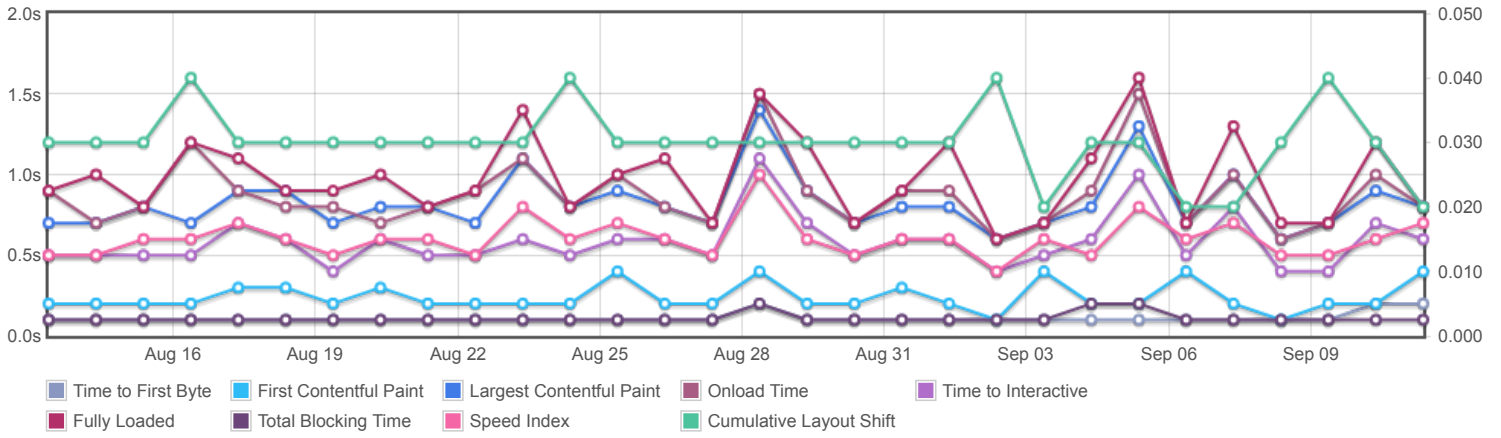
GTmetrix is developed by the good folks at **Carbon60**, a Canadian hosting company with over 26 years experience in web technology.

<https://carbon60.com/>

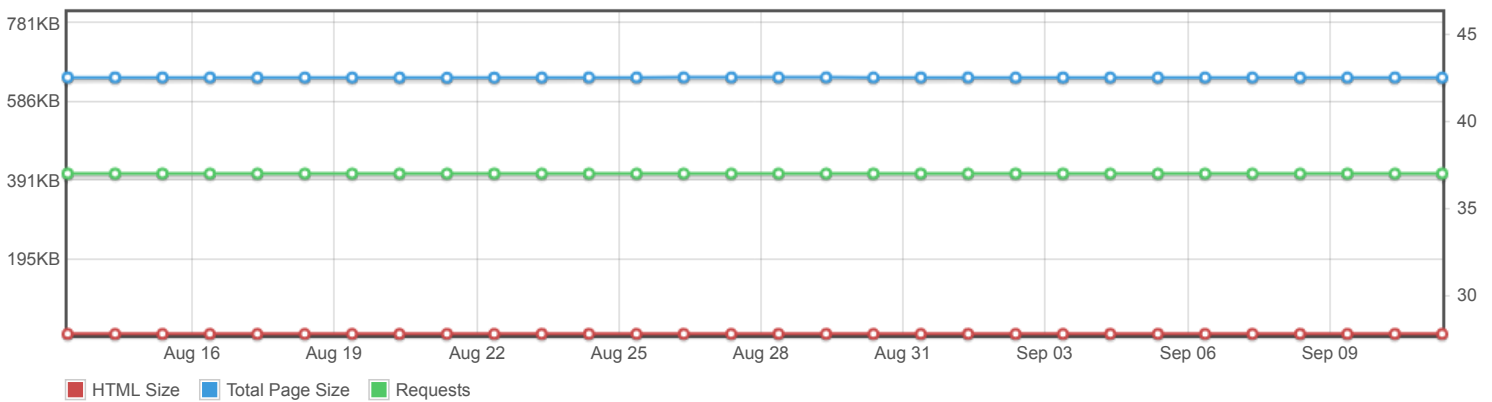
Page scores



Page metrics

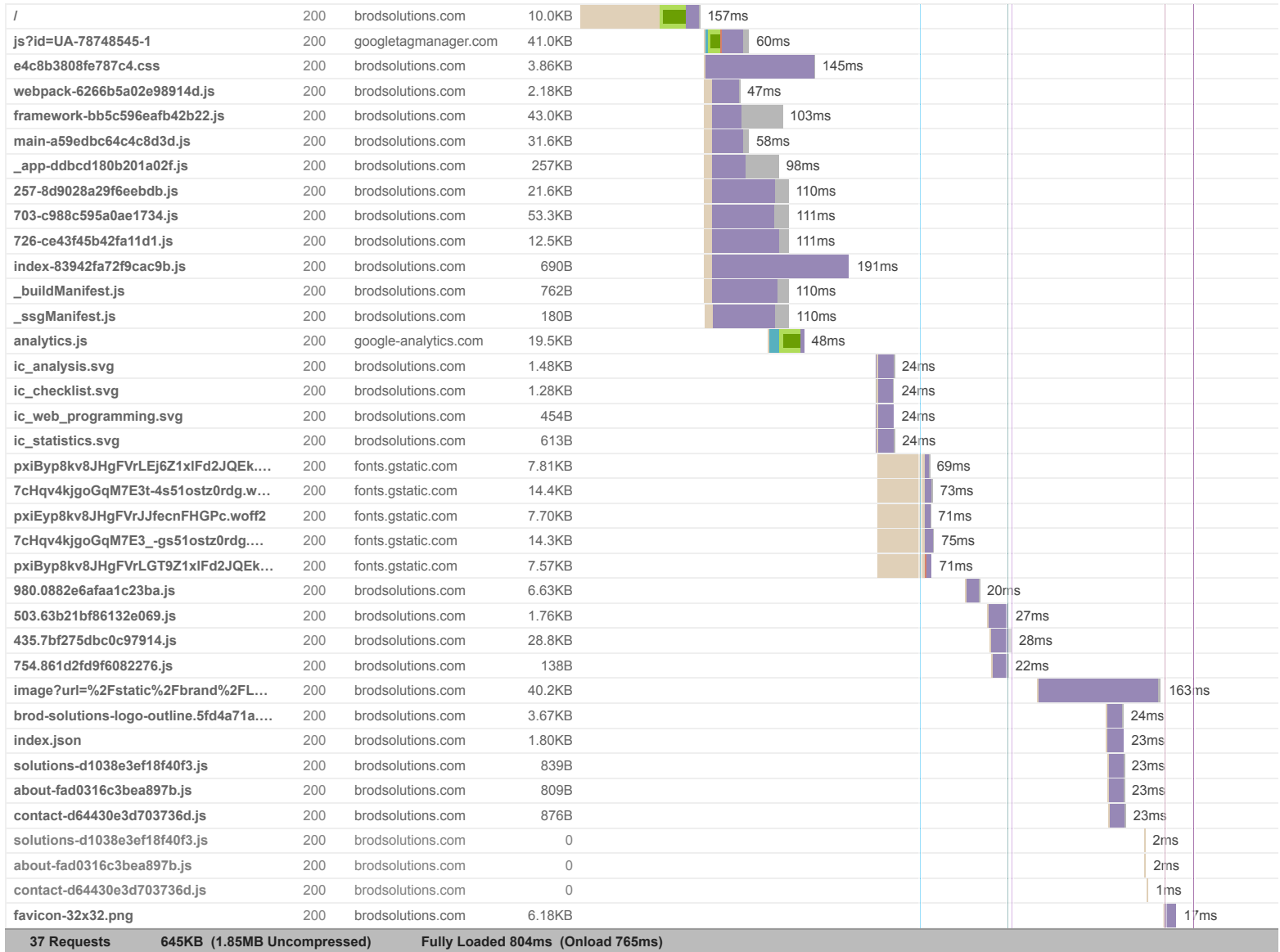


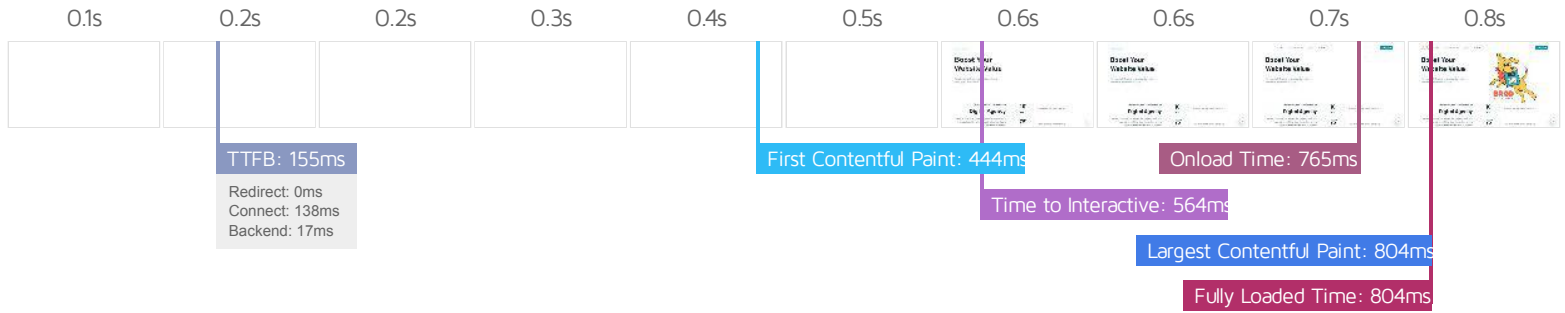
Page sizes and request counts



The waterfall chart displays the loading behaviour of your site in your selected browser. It can be used to discover simple issues such as 404's or more complex issues such as external resources blocking page rendering.

Learn Create Solve Share - Brod Solutions | BROD SOLUTIONS





### Performance Metrics

<p><b>First Contentful Paint</b></p> <p>How quickly content like text or images are painted onto your page. A good user experience is 0.9s or less.</p>	<p>Good - Nothing to do here</p> <p><b>443ms</b></p>	<p><b>Time to Interactive</b></p> <p>How long it takes for your page to become fully interactive. A good user experience is 2.5s or less.</p>	<p>Good - Nothing to do here</p> <p><b>563ms</b></p>
<p><b>Speed Index</b></p> <p>How quickly the contents of your page are visibly populated. A good user experience is 1.3s or less.</p>	<p>Good - Nothing to do here</p> <p><b>666ms</b></p>	<p><b>Total Blocking Time</b></p> <p>How much time is blocked by scripts during your page loading process. A good user experience is 150ms or less.</p>	<p>Good - Nothing to do here</p> <p><b>56ms</b></p>
<p><b>Largest Contentful Paint</b></p> <p>How long it takes for the largest element of content (e.g. a hero image) to be painted on your page. A good user experience is 1.2s or less.</p>	<p>Good - Nothing to do here</p> <p><b>803ms</b></p>	<p><b>Cumulative Layout Shift</b></p> <p>How much your page's layout shifts as it loads. A good user experience is a score of 0.1 or less.</p>	<p>Good - Nothing to do here</p> <p><b>0.02</b></p>

### Browser Timings

Redirect	0ms	Connect	138ms	Backend	17ms
TTFB	155ms	DOM Int.	174ms	First Paint	443ms
DOM Loaded	560ms	Onload	765ms	Fully Loaded	804ms

IMPACT	AUDIT	
Low	<b>Serve static assets with an efficient cache policy</b>	Potential savings of 14.9KB
Low	<b>Reduce unused JavaScript</b> <small>LCP</small>	Potential savings of 226KB
Low	<b>Avoid enormous network payloads</b> <small>LCP</small>	Total size was 648KB
Low	<b>Properly size images</b>	Potential savings of 14.6KB
Low	<b>Avoid long main-thread tasks</b> <small>TBT</small>	3 long tasks found
Low	<b>Reduce JavaScript execution time</b> <small>TBT</small>	203ms spent executing JavaScript
Low	<b>Avoid serving legacy JavaScript to modern browsers</b> <small>TBT</small>	Potential savings of 7.84KB
Low	<b>Avoid chaining critical requests</b> <small>FCP LCP</small>	5 chains found
N/A	<b>Avoid an excessive DOM size</b> <small>TBT</small>	227 elements
N/A	<b>Largest Contentful Paint element</b> <small>LCP</small>	1 element found
N/A	<b>Reduce initial server response time</b> <small>FCP LCP</small>	Root document took 17ms
N/A	<b>Avoid large layout shifts</b> <small>CLS</small>	5 elements found
N/A	<b>Minimize main-thread work</b> <small>TBT</small>	Main-thread busy for 519ms
N/A	<b>User Timing marks and measures</b>	4 user timings
N/A	<b>Reduce the impact of third-party code</b> <small>TBT</small>	Total size was 114KB